



Renewable Universal Power Supply LTN1-300RUPS / LTN2-300RUPS

Features

- ❖ Using Solar to Power Anything Low-Voltage!
- ❖ 50W "Shadow Proof" Solar Panel
 - Independently wired bypass diodes for enhanced chargeability
- ❖ Mounting Bracket
 - LTN1-300RUPS: 3in-4in Round or Square Pole, Wall or Rooftop Mount, for up to (2) 50W solar panels
 - LTN2-300RUPS: 2in. Tenon Mount
- ❖ 304 Stainless Steel Power Station
 - 300W 14.2V 22.5 Ahr Rechargeable Battery (Replaceable)
 - Solar Controller Driver
 - Timer with Photo Eye
 - U-Bolts (if necessary)

Specification

- ❖ Solar Power Supply with 300W Battery
- ❖ 2000 Charge Cycles or 5 years
- ❖ Operation Temp. Range -4°F to 140°F
- ❖ 3 Year System Warranty

Timer Operation

- ❖ ON/OFF
- ❖ Auto (full Dusk to Dawn)
- ❖ Dusk to 2/4/6/8 hours

Operation Voltage

- ❖ Fully charged – 14.2 VDC
- ❖ Dropout – 11.8V VDC

Low Voltage Applications

- Landscape Lighting
- Security Camera/Alarm
- Security Gate
- Electric Fence
- Roadway Signage (DOT)
- Construction Area Lighting
- Roadway Area Lighting
- Irrigation Controller
- Auto Livestock Feeder
- Emergency Power

Job Name:

Date:

Model:

Quantity:

LTN1-300RUPS

LTN2-300RUPS



LOAD CAPACITY – HOURS OF OPERATION

Based upon fully charged battery. Hours of operation will vary if battery is not fully charged. Recommended NOT to use full charge capacity daily to ensure operation after cloudy or cold weather days.

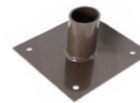
LOAD (WATTS)	28	35	47	71	143	285
HOURS	10	8	6	4	2	1

DISPLAYS AVAILABLE
5' TALL X 2' WIDE

LTN-SL-SAL-BKT-ST-3-BK-G1

LTN-SL-SAL-BKT-RT-3-BK-G1

LTN-SL-SAL-BKT-WM-3-BK-G1



PART NUMBER	UPC	WATTS	DIMENSIONS	WEIGHT
LTN1-300RUPS	850016499806	300	13 x 4.34 x 3.9"	14.9 lbs.
LTN2-300RUPS	850041316635	300	13.46 x 5.12 x 4.65"	15.8 lbs.

650 Algonquin Rd, Ste 206, Schaumburg, IL 60176
PH: 847.496.5276 FAX: 846.701.8342